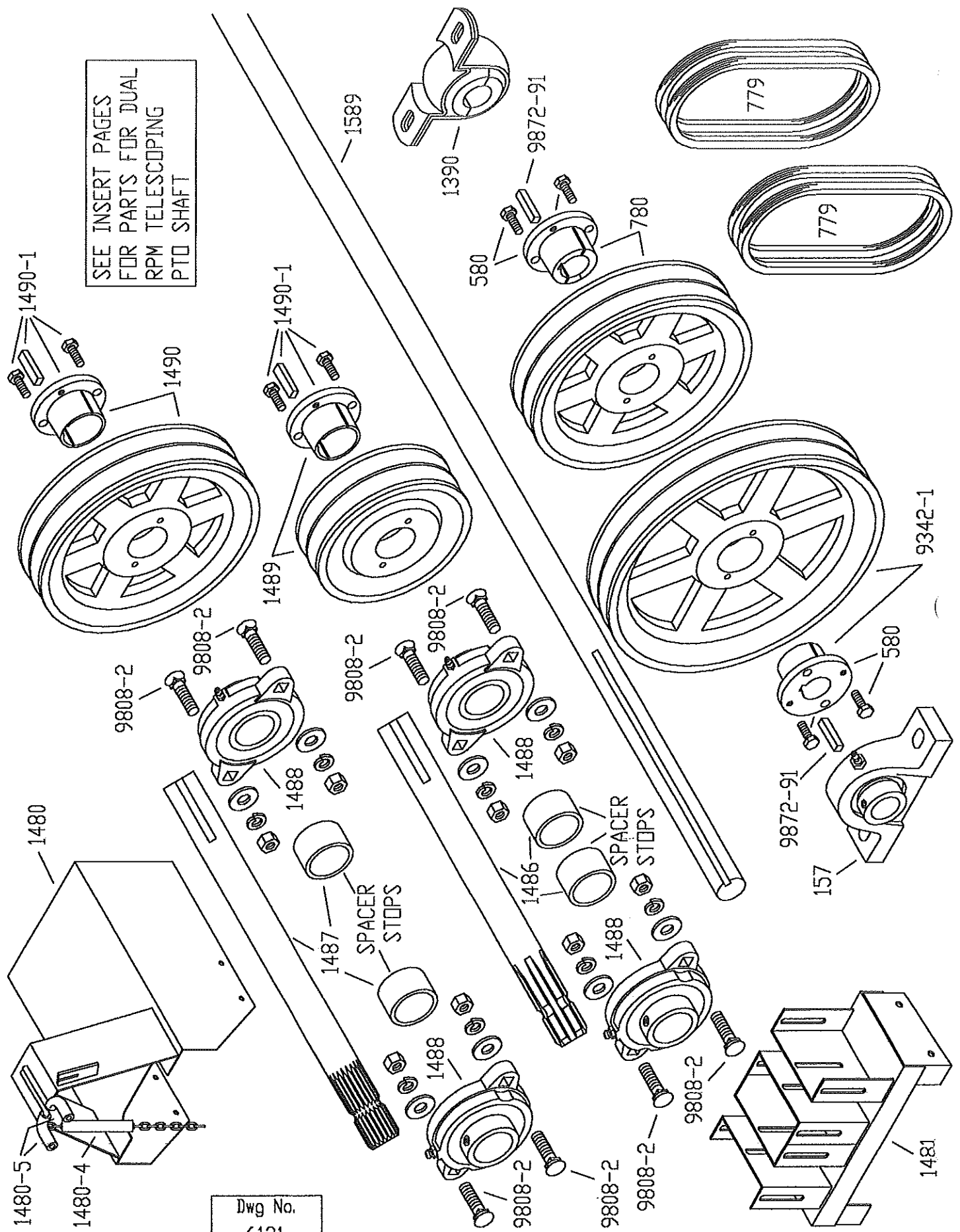


PARTS FOR N64LD OPTIONAL DUAL RPM PTO DRIVE

SEE INSERT PAGES
FOR PARTS FOR DUAL
RPM TELESCOPING
PTO SHAFT



Dwg No.
6121

PARTS FOR N64LD OPTIONAL DUAL RPM PTO DRIVE

PART NO.	ITEM
580	1" BUSHING FOR NO. 780 AND NO. 9342-1 V-BELT PULLEYS ON 1" DIA. SHAFT (INCLUDES TWO 1/4" X 3/4" BOLTS ONLY)
779	MATCHED V-BELTS (ONE PAIR)
780	8" O.D., TWO GROOVE, V-BELT PULLEY (INCLUDES NO. 580 BUSHING) (MOUNTS ON 1" DIA SHAFT)
1390	1" WOOD (SPLIT) HAGER BEARING
1390-1	SPLIT WOOD INSERT FOR NO. 1390 HANGER BEARING
1480	SHIELD FOR V-BELT PULLEYS AND HOLDER FOR TELESCOPING PTO SHAFT
1480-4	PLASTIC COVER FOR CHAIN
1480-5	PLASTIC COVER FOR HOLDER (TWO REQUIRED)
1481	BRACKET FOR V-BELT DRIVE
1486	6 TOOTH V-BELT DRIVE SHAFT 1-3/8" DIA. X 14-1/2" LONG (INCLUDES TWO SPACER STOPS AND INSTALLATION DRAWING NO. 2053)
1487	21 TOOTH V-BELT DRIVE SHAFT 1-3/8" DIA. X 16-1/2" LONG (INCLUDES TWO SPACER STOPS AND INSTALLATION DRAWING NO. 2053)
1488	1-3/8" FLANGE BEARING
1489	5-1/2" O.D., TWO GROOVE, V-BELT PULLEY (INCLUDES NO. 1490-1 BUSHING) (MOUNTS ON 1-3/8" DIA. SHAFT)
1490	8" O.D., TWO GROOVE, V-BELT PULLEY (INCLUDES NO. 1490-1 BUSHING) (MOUNTS ON 1-3/8" DIA. SHAFT)
1490-1	1-3/8" BUSHING FOR NO. 1489 AND NO. 1490 V-BELT PULLEYS ON 1-3/8" SHAFT (INCLUDES RECTANGULAR KEY 7/32" X 5/16" X 1-1/4" LONG AND TWO 1/4" X 3/4" BOLTS)
1589	FAN DRIVE SHAFT (1" DIA. X 130" LONG)
9342-1	10" O.D., TWO GROOVE, V-BELT PULLEY (INCLUDES NO 580 BUSHING) (MOUNTS ON 1" DIA. SHAFT)
9808-2	BOLT FOR NO. 1488 FLANGE BEARING (3/8" X 1-1/2" PLOW BOLT WITH SQUARE NECK)
9872-91	SQUARE KEY FOR NO. 580 BUSHING AND 1" DIA. SHAFT (STATE LENGTH NEEDED) (1/4" X 1-1/4" LONG REQUIRED)

SEE INSERT PAGES FOR
PARTS FOR DUAL RPM
TELESCOPING PTO SHAFT

FAN DRIVESHAFT 1" DIA. X 12 1/2" LONG
 DETAILED ON DWG. NO. 1886

1/4" SQUARE KEY X 4" LONG

580
 BROWNING
 H-1 BUSHING
 TWO REQ'D

LEFT
 TONGUE
 CHANNEL

9342-3
 BROWNING
 2BK100H SHEAVE

780-1
 BROWNING
 2BK80H SHEAVE

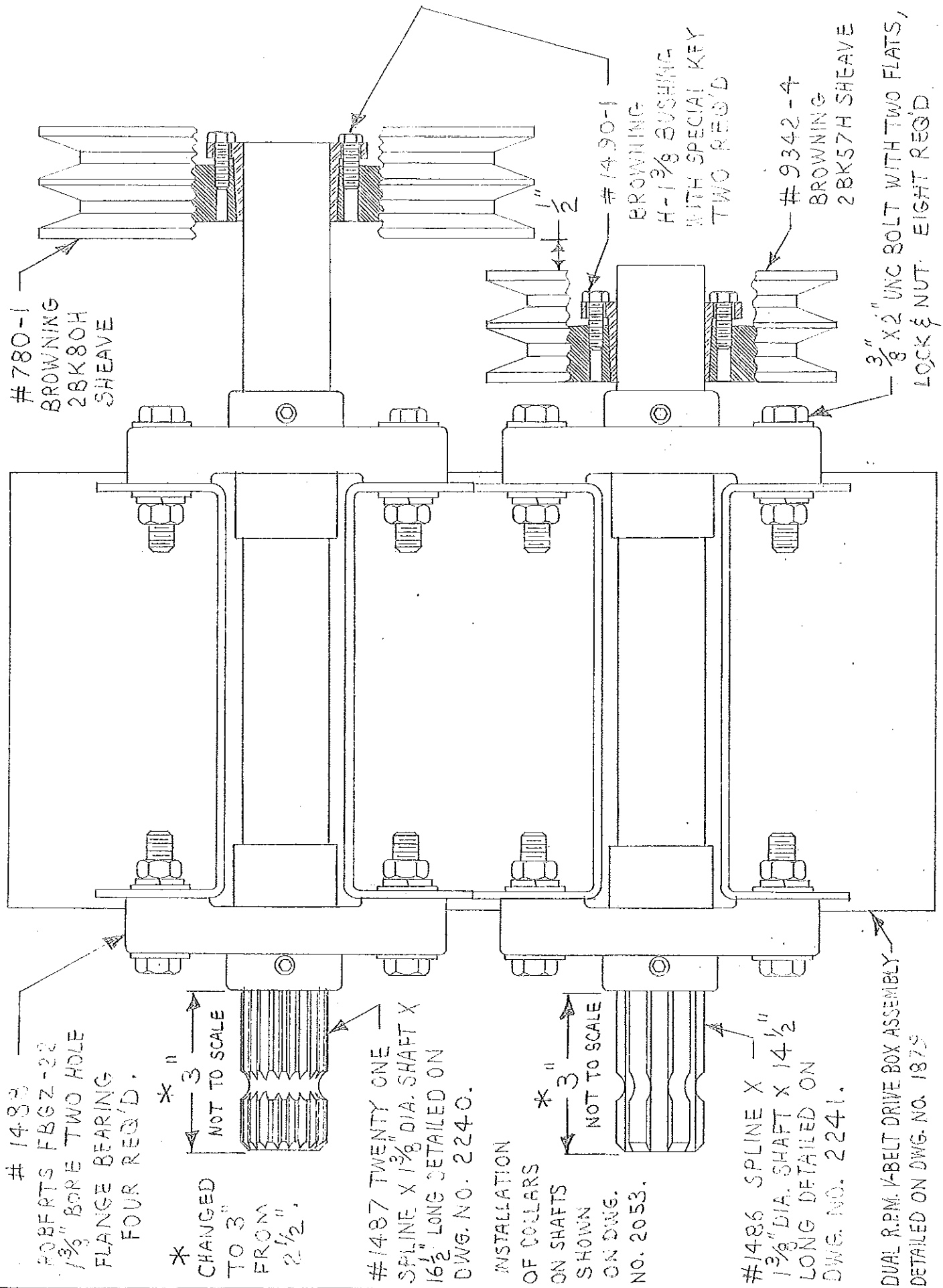
3/8" X 1/4" UNC BOLT WITH FLAT
 LOCK & NUT TWO REQ'D

157
 LINK BELT PS-U216N
 1" BORE PILLOW
 BLOCK BEARING

FRONT BEARING
 BRACKET FOR FAN
 DRIVESHAFT
 INSTALLATION SHOWN
 ON DWG. NO. 1891

RIGHT
 TONGUE
 CHANNEL

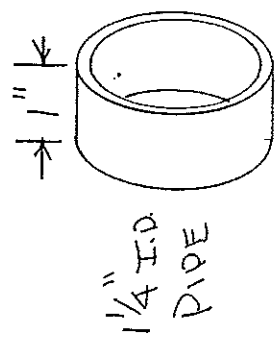
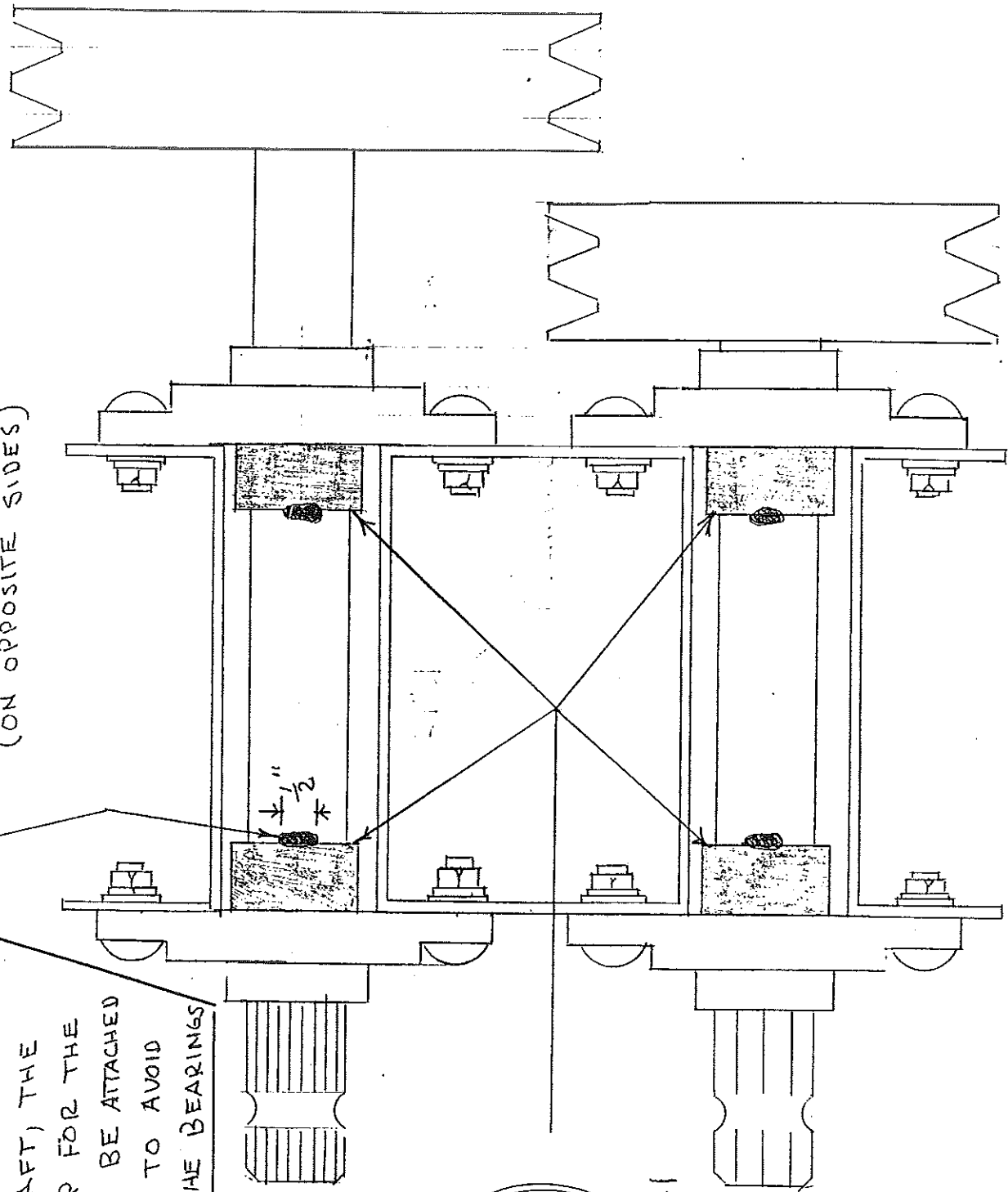
SIMONSEN MFG. CO. Quimby, Iowa	N52 & 64-H Title INSTALLATION OF DUAL R.P.M. SHEAVES ON FAN DRIVESHAFT	Dr By RJ	Ck By	Date 8-16-78	Scale 1"=2"	Dwg No. 1917
-----------------------------------	--	-------------	-------	-----------------	----------------	-----------------



SIMONSEN MFG. CO. Quimby, Iowa	NS2E64H Title DUAL R.P.M. P.T.O. DRIVE ASSEMBLY	Dr. By. RJ	Ck By.	Date 8-10-78	Scale 1" = 2"	Dwg No. 1916
-----------------------------------	---	---------------	--------	-----------------	------------------	-----------------

WELD PIPE TO SHAFT WITH $\frac{1}{2}$ " LONG
 WELDS - 2 WELDS ON EACH PIPE
 (ON OPPOSITE SIDES)

CAUTION: WHEN WELDING
 PIPES TO SHAFT, THE
 GROUND CLAMP FOR THE
 WELDER MUST BE ATTACHED
 TO THE SHAFT TO AVOID
 DAMAGE TO THE BEARINGS



Part # 1421-1

NOTE: DO NOT WELD PIPES TO SHAFT UNTIL PULLEYS ARE ALIGNED AND BELTS TIGHTENED

SIMONSEN MFG. CO. Quimby, Iowa	Title PIPE COLLARS FOR $1\frac{3}{8}$ " SHAFT ON 540-1000 DTG	Dr By LS	Date 6-7-79	Scale NONE	Dwg No. 2053
-----------------------------------	---	-------------	----------------	---------------	-----------------