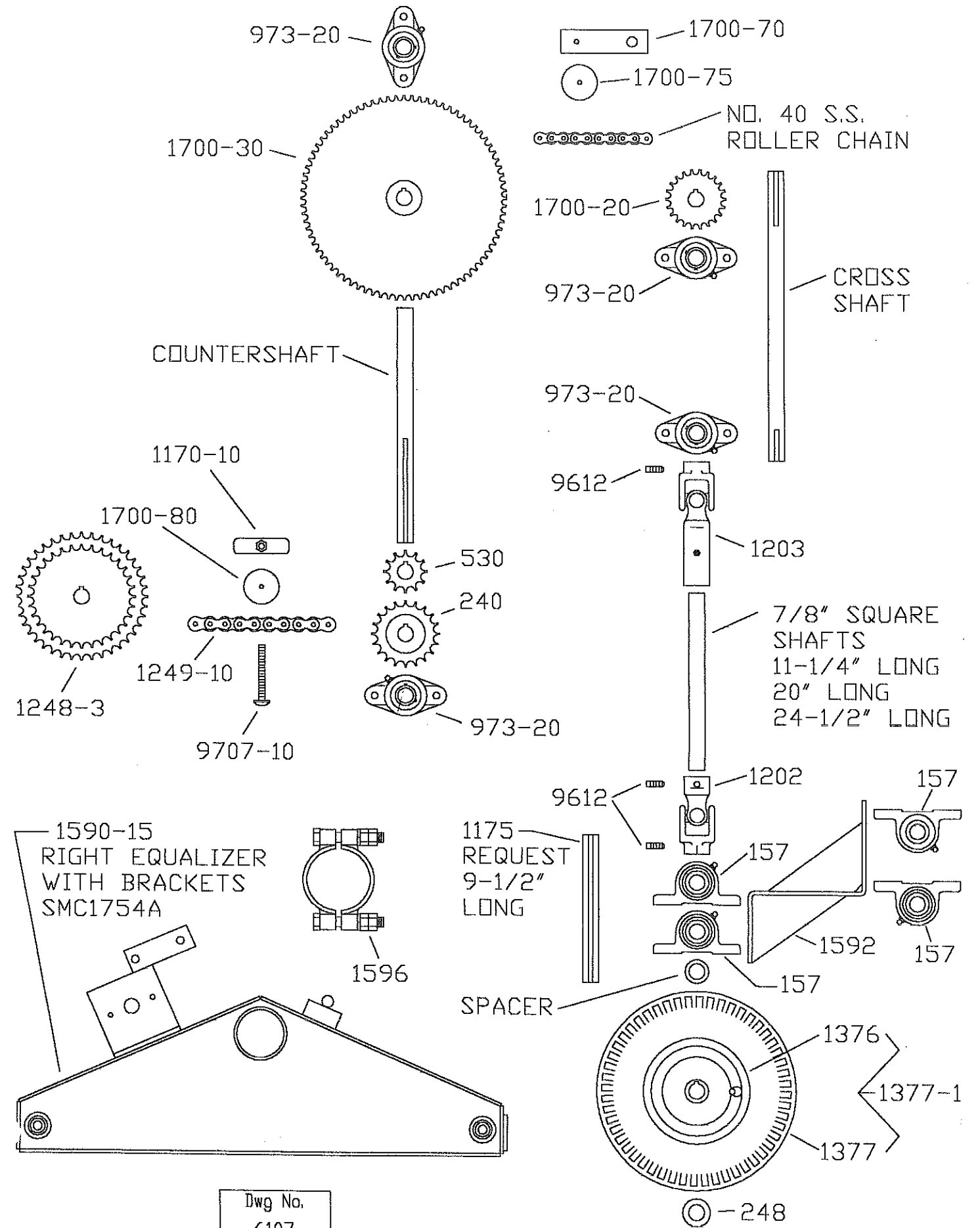


PARTS FOR SMC1754A WHEEL DRIVE 60"-88" TREAD WIDTH

ART NO.	ITEM
157	1" PILLOW BLOCK BEARING
240	20T50-1 SPROCKET
248	1" SET COLLAR
530	12T50-1 SPROCKET
816	NO. 50 CONNECTOR LINK (STAINLESS STEEL) (NOT SHOWN)
817	NO. 50 OFFSET LINK (STAINLESS STEEL) (NOT SHOWN)
973-20	1" FLANGE BEARING
1175	WHEEL DRIVE SHAFT (1" DIA. X 9-1/2" LONG) (REQUEST 9-1/2" LONG)
1170-10	3/8" HANDLE NUT
1248-3	DUAL SPROCKET 32-40T50-1
1249-20	NO. 50 ROLLER CHAIN (STAINLESS STEEL) 107 PITCHES LONG (66-7/8" LONG) PLUS ONE CONNECTOR LINK
1376	WHEEL DRIVE TIRE (13 X 5.00-4 PLY PNEUMATIC) ¹³⁷⁶
1377	WHEEL DRIVE HUB AND RIM ASSEMBLY FOR NO. 1377 PNEUMATIC TIRE
1377-1	NO. 1376 TIRE AND NO. 1377 RIM (ASSEMBLED)
1590-15	RIGHT EQUALIZER WITH BRACKETS FOR WHEEL DRIVE (LESS HUBS)
1592	ROCKER ARM
.596	EQUALIZER RETAINING RING
1700-11	NO. 40 CONNECTOR LINK (STAINLESS STEEL) (NOT SHOWN)
1700-20	22T40-1 SPROCKET
1700-30	80T40-1 SPROCKET
1700-70	ARM FOR NO. 1700-75 CHAIN TIGHTENER
1700-75	WOOD CHAIN TIGHTENER BLOCK FOR NO. 40 ROLLER CHAIN (1-1/2" THICK)
1700-80	WOOD CHAIN TIGHTENER BLOCK FOR NO. 50 ROLLER CHAIN (2-3/4" THICK)
9707-10	CARRIAGE BOLT (3/8" X 3-1/2")
9612	SQUARE HEAD SET SCREW (3/8" X 3/4")
—	7/8" SQUARE SHAFTS 11-1/4" LONG 20" LONG 24-1/4" LONG
—	COUNTERSHAFT 1" DIA. X 15-1/8" LONG (DRAWING NO. 5374)
—	CROSS SHAFT 1" DIA. X 18-1/2" LONG (DRAWING NO. 5375)
—	NO. 40 ROLLER CHAIN (STAINLESS STEEL) 195 PITCHES LONG (97-1/2" LONG) PLUS CONNECTOR LINK AND ONE OFFSET LINK (STATE LENGTH NEEDED)
—	SPACER (1" I.D. PIPE X 1/2" LONG)

PARTS FOR SMC1754A WHEEL DRIVE 60"-88" TREAD WIDTH



Dwg No.
6108

Dwg No.
6107